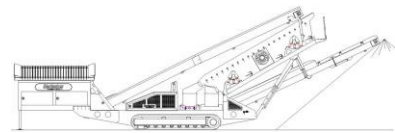


SPECIFICATIONS



McCloskey ***S190***



DESCRIPTION

Heavy duty mobile screener with following features:

- 20x5 heavy duty high energy 2 bearing screenbox.
- 125Hp Cat engine.
- Track or wheel mobile.
- Integrated hydraulic folding stockpiling conveyors.
- Remote control tipping grid.
- Fast on site setup time – 10 minutes.

DIMENSIONS AND WEIGHTS

Length - transport all models	17.16m (56' - 4")
Width - transport all models	2.90m (9' - 6")
Height - transport track	3.40m (11' - 2")
Height - transport wheel	3.68m (12' - 1")
Weight - track	36,000 Kgs (79,366 lbs) - estimated
Weight - wheel	31,000 Kgs (68,343 lbs) - estimated

CAPACITIES

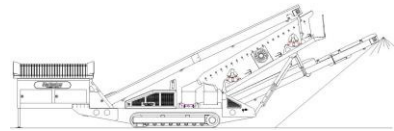
Diesel tank capacity	399 L (105 US gal)
Hydraulic tank capacity	630 L (166 US Gals)
Capacity - 12ft hopper	8.01 m ³ (10.48 yd ³)
Capacity - 15ft hopper	10.01 m ³ (13.09 yd ³)

FEED CONVEYOR

Belt width	1200mm (48")
Belt spec	Plain 500/3 6+3
Drive drum dia.	335mm (13.1")
Tail drum dia.	320mm (12.5")
Gearbox	Bonfig 805 W2
Gearbox ratio	24.2
Gearbox torque	7000Nm cont, 12500Nm max
Motor	Danfoss OMSS160
Flow rate	72.6 Lpm (19.2 US gpm)
Adjustable speed	YES
Maximum speed	18.75 rpm

MAIN CONVEYOR

Belt width	1050mm (42")
Belt spec	Plain 400/3 6+1.5
Drive drum dia.	285mm (11.2")
Tail drum dia.	270mm (10.6")
Motor	Danfoss OMV800
Flow rate	101.2 Lpm (26.7 US gpm)
Adjustable speed	OPTION
Maximum speed	126.5 rpm

**TAIL CONVEYOR**

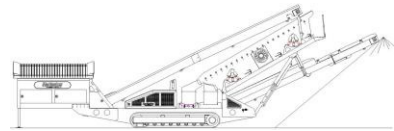
Stockpile height - track model	4638mm (15' - 3")
Stockpile height - wheel model	4905mm (16' - 1")
Belt width	1200mm (48")
Belt spec	Plain - 400/2 6+1.5
Drive drum dia.	285mm (11.2")
Tail drum dia.	270mm (10.6")
Motor	Danfoss OMV800
Flow rate	101.2 Lpm (26.2 US gpm)
Maximum speed	126.5 rpm

SIDE CONVEYOR

Stockpile height - track model	5100mm (16' - 9")
Stockpile height - wheel model	5370mm (17' - 7")
Belt width	800mm (32")
Belt spec	Chevron - 400/3 6+1.5
Drive drum dia.	285mm (11.2")
Tail drum dia.	270mm (10.6")
Motor	OMT400
Flow rate	50.6 Lpm (13.4 US gpm)
Adjustable speed	YES
Maximum speed	126.5 rpm

SCREENBOX

Dimensions - top deck	6100mm x 1524mm (20' x 5')
Dimensions - bottom deck	5490mm x 1524mm (18' x 5')
Bearing type	NSK 110mm bore
Screens - top deck	5' x 4' side tension - 5 off
Screens - bottom deck	5' x 6' end tension - 3 off
Tensioning - top deck	Quick release pin and wedge
Tensioning - bottom deck	Curved tension bar and adjuster
Screen angle	20 to 30 deg
Screen motor	DBH MCC2213 (85.7cc/rev)
Drive system	Direct drive with HRC180 coupling
Hydraulic flowrate	101.2 Lpm (26.7 US gpm)
Speed adjustable	YES - Pressure compensated FCV
Screen stroke adjustable	6 - 10mm maximum
Screen shaft speed	1130 - 950 rpm
Screen 'g' force	4.29 - 5.05 g

**POWERUNIT AND HYDRAULICS**

Engine	CAT 3054 ATAAC (Teir II)
Engine power	125 HP
Engine speed	2200 rpm
Flywheel Pump 1	DBH 5046,5046,5033
LH PTO Pump 2	DBH 5023,5023
RH PTO Pump 3	DBH 2SPA11
Total system flow	419 L (110.7 US Gpm)
Hydraulic tank capacity	630 L (166 US Gals)
Hydraulic tank ratio	1.51 : 1
Hydraulic Oil cooler	YES

ELECTRIC HYDRAULIC POWERUNIT (with wheeled option only)

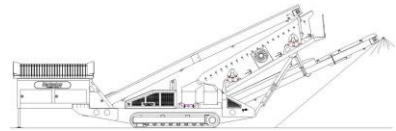
2 Electric motors	37KW
Frequency	50hz or 60hz
Voltage	3 phase 415V or customer specific
Control panel can be supplied upon request	

ELECTRICS

Emergency stops	6 off, 1 feeder, 2 powerunit RH&LH, 2 chassis front RH&LH, 1 Walkway
Chassis cabling	Armored cable
Start Siren	YES - 10 sec delay
Engine shutdowns:	Low oil pressure High water temp Air filter blockage (selectable) Fuel contamination Low hydraulic tank level
Engine room light	YES
Remote tipping grid	YES - 2 function timed
Radio control tracks	optional - Hetric system
Pendant track control	YES - plugged in at feeder end

TRACKS

Width	500mm (19.7")
Length	3800mm (12' - 6") crs
Height	798mm (31.4")
Gearbox	Bonfiglioli 709
Ratio	148:1
Motor	Rexroth 90
Speed max	1.14 Kph (0.71 Mph)
Flow rate	101.2 Lpm (26.7 US gpm)
Dual speed	TBC
Attachment to chassis	Bolt On for quick change

**WHEELS**

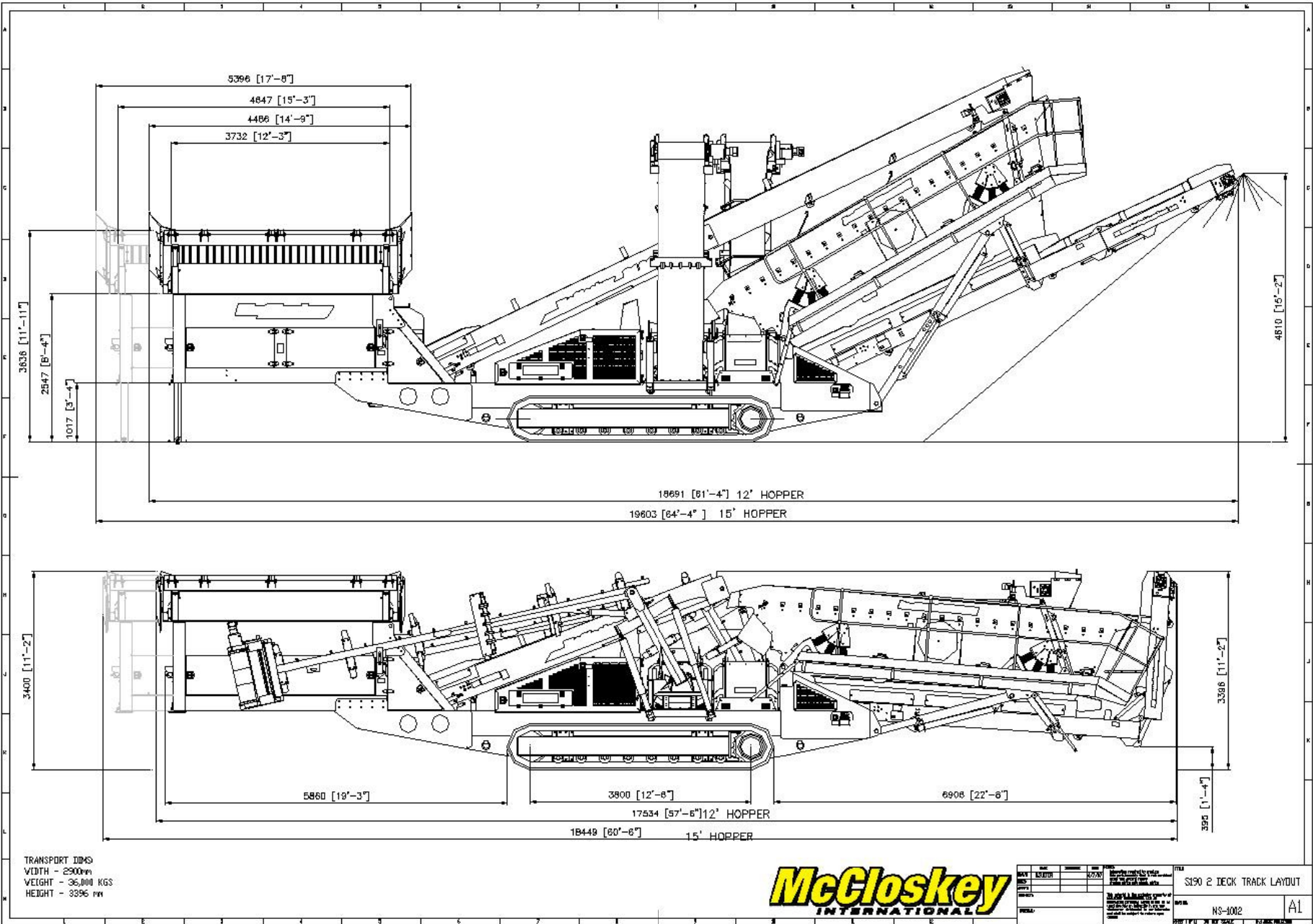
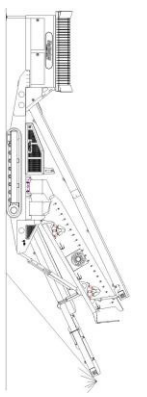
Width	2900mm (9' - 6")
Axle centers	1360mm (4' - 6")
Wheels	235/75/R17.5 dual
Axles	3 off
Brakes	YES
Spring suspension	YES
Mudguards	YES
Handbrake	OPTION
ABS	OPTION

OPTIONS

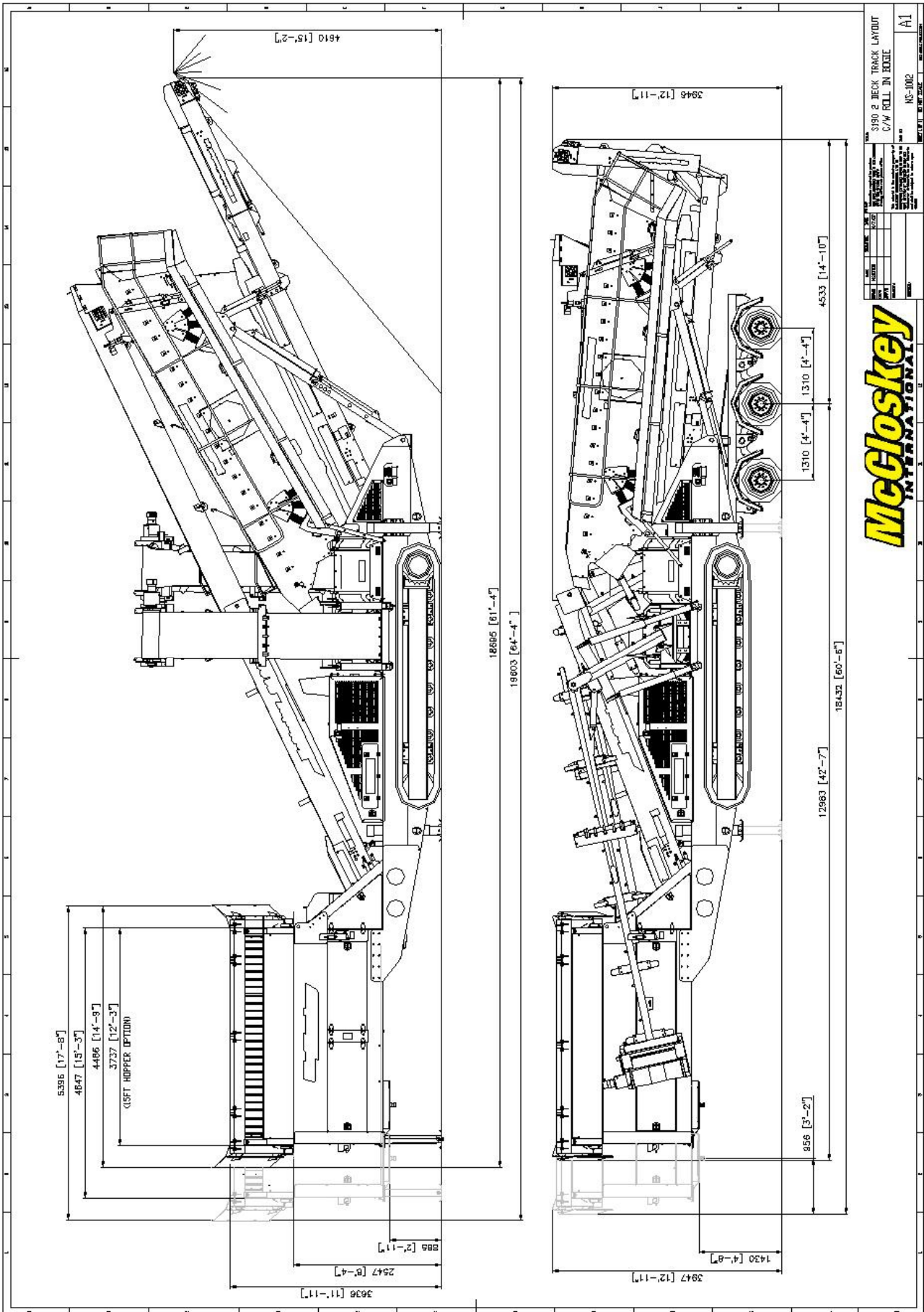
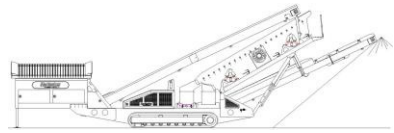
Single or double deck live head
Roll-in bogie system
15ft Hopper
3 Deck Dry
3 Deck Rinser
Crusher chute (available with 15ft hopper only)
Radio remote control

SAFETY FEATURES

External belt alignment points
External grease points
Engine safety shutdown systems
Full safety guarding for nip points

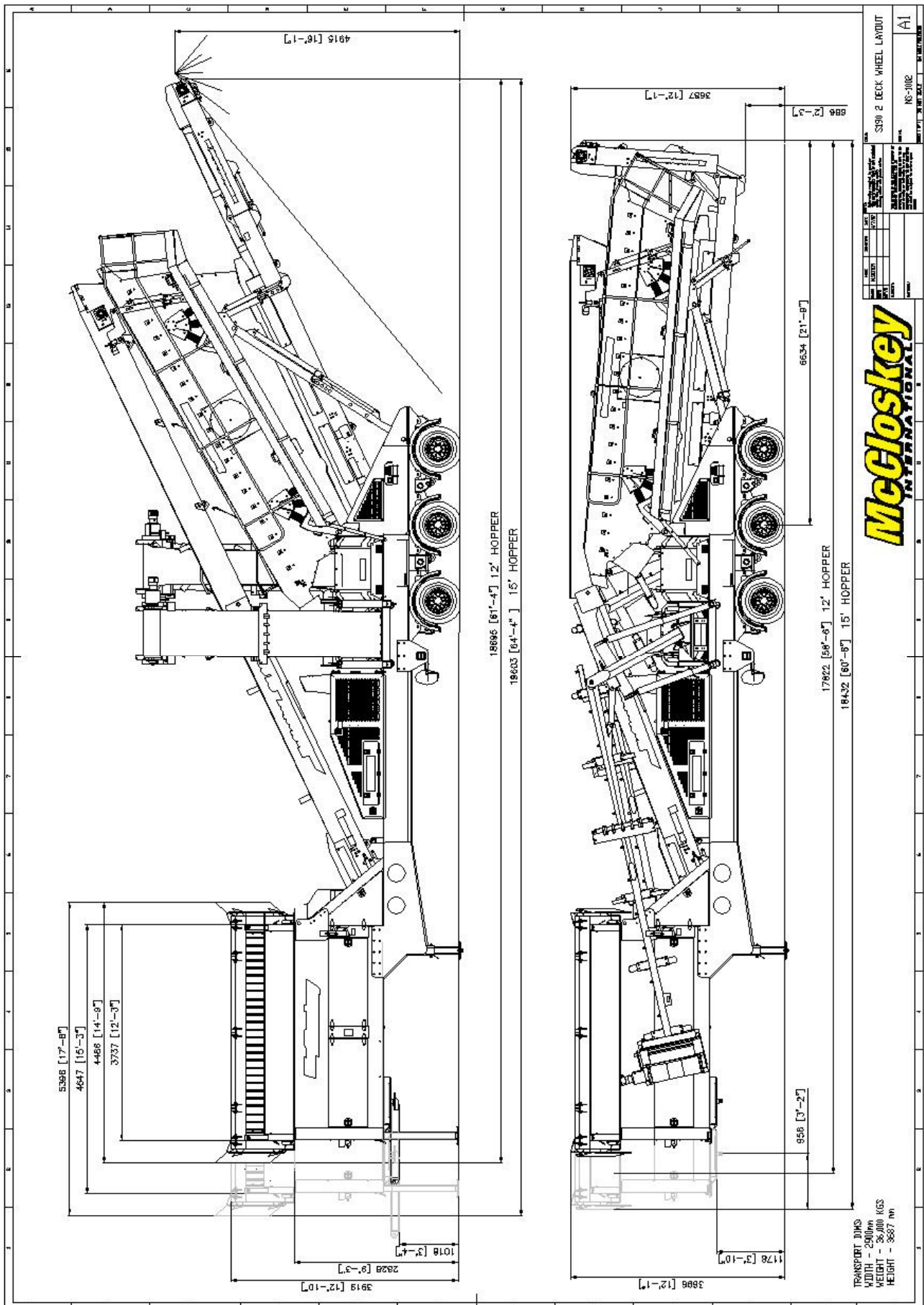
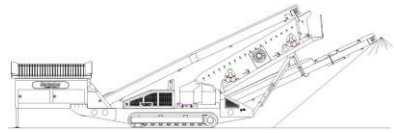


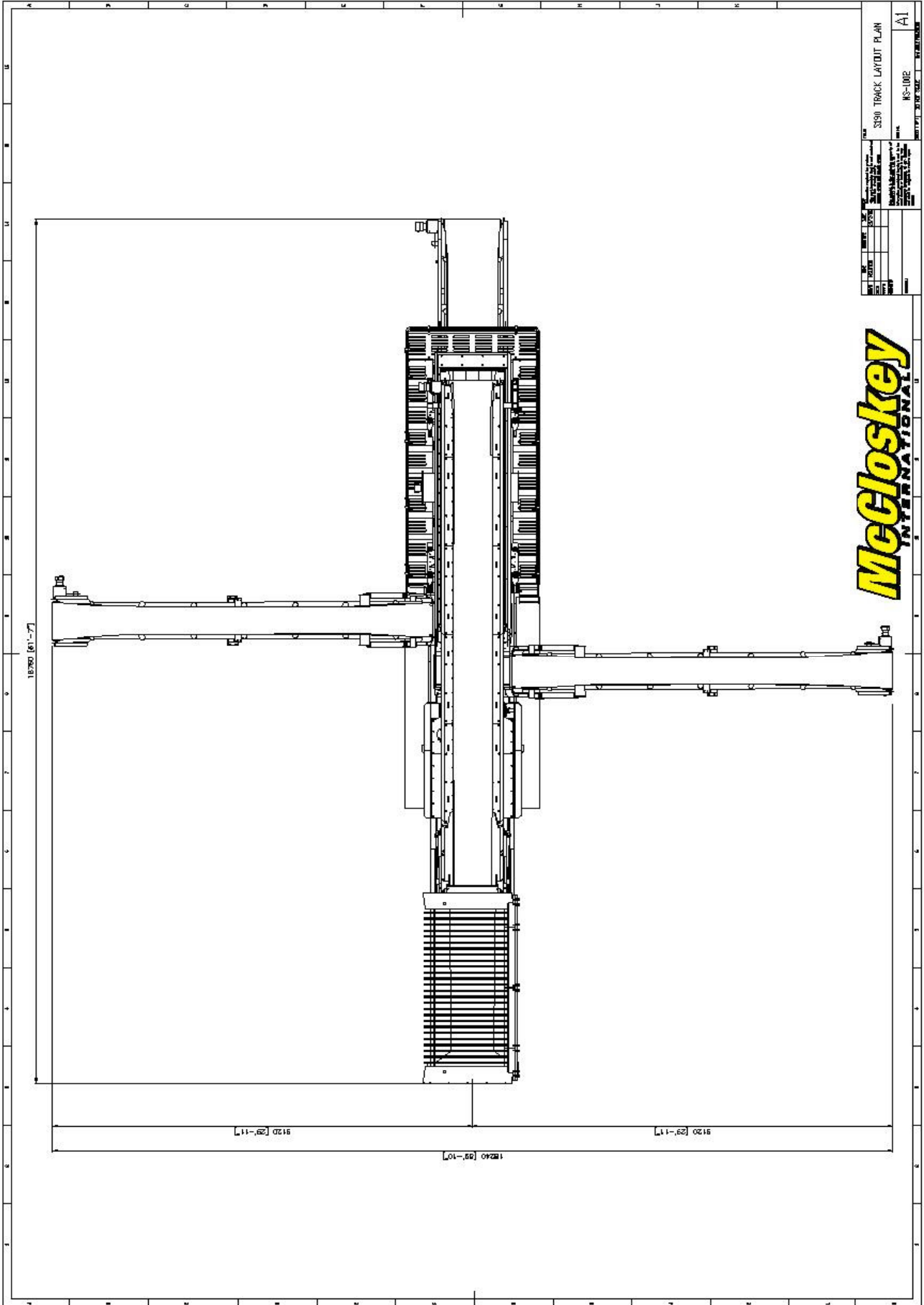
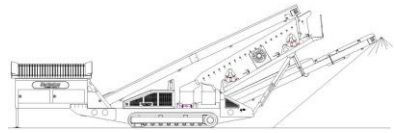
All specifications are current as of this printing, but are subject to change



NO.	190	TRUCK MOUNTED CRANE
DATE	11/20/06	
REV.	001	
BY	WJ	
CHECKED		
APPROVED		
SCALE		
S190 3 BECK TRACK LAYOUT C/W ROLL IN BOXIE		
REV.	002	
DATE	11/20/06	
BY	WJ	
CHECKED		
APPROVED		
SCALE		

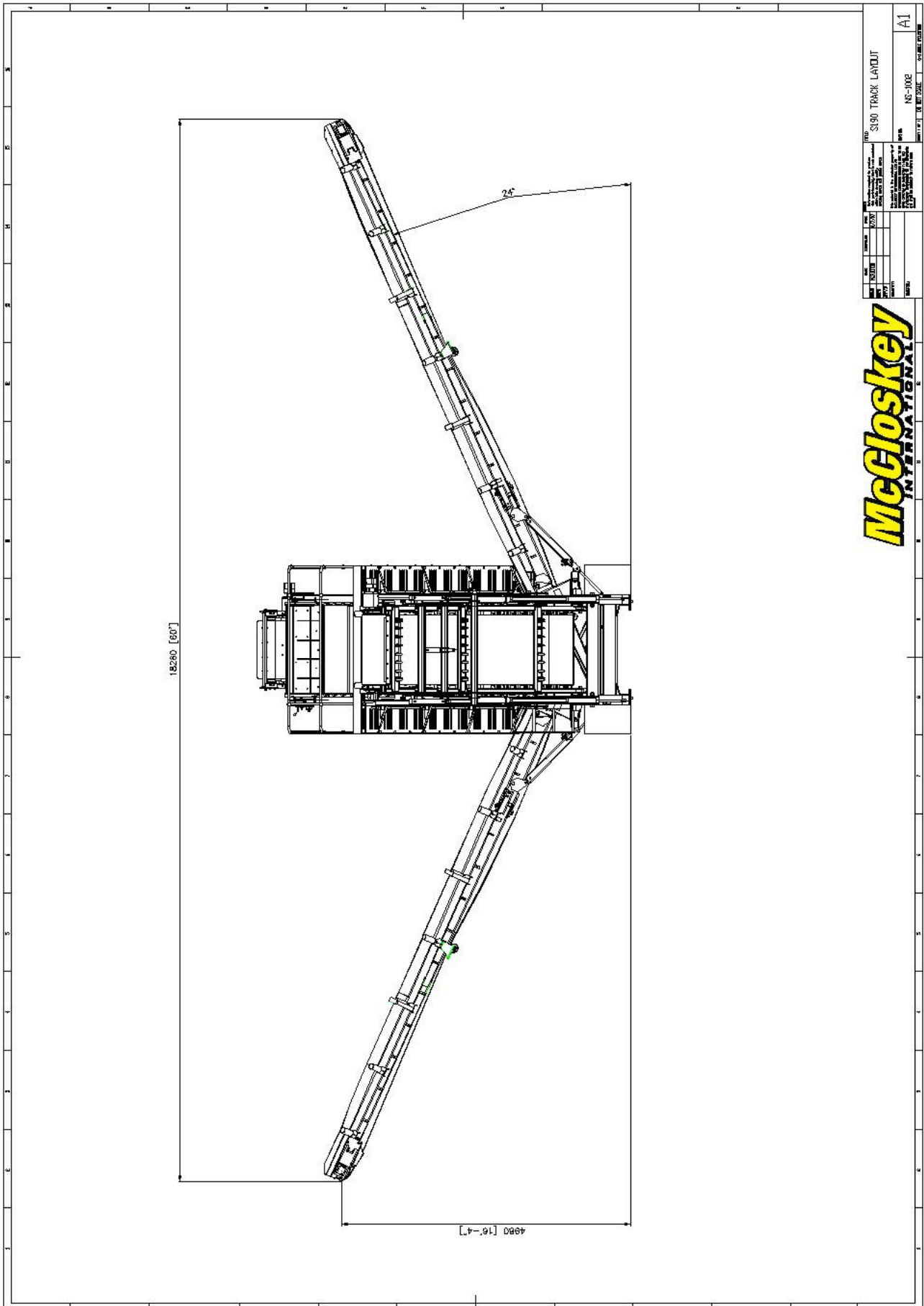
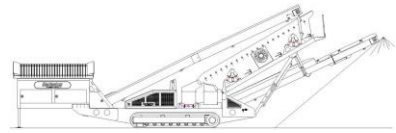
McCloskey
INTERNATIONAL





DATE		3/31/06	
DRAWN BY		J. J. ...	
CHECKED BY		...	
SCALE		AS SHOWN	
PROJECT		S190 TRACK LAYOUT PLAN	
SHEET NO.		MS-1002	
SHEET TOTAL		1 OF 1	
DRAWING NO.		A1	

McCloskey
INTERNATIONAL



TITEL		S190 TRACK LAYOUT	
NO.	1000	REV.	01
DATE	11/01/06	BY	MS-1002
SCALE	1:1	CHKD	
PROJECT	S190 TRACK LAYOUT		
DRAWN	MS-1002		
CHECKED			
APPROVED			

