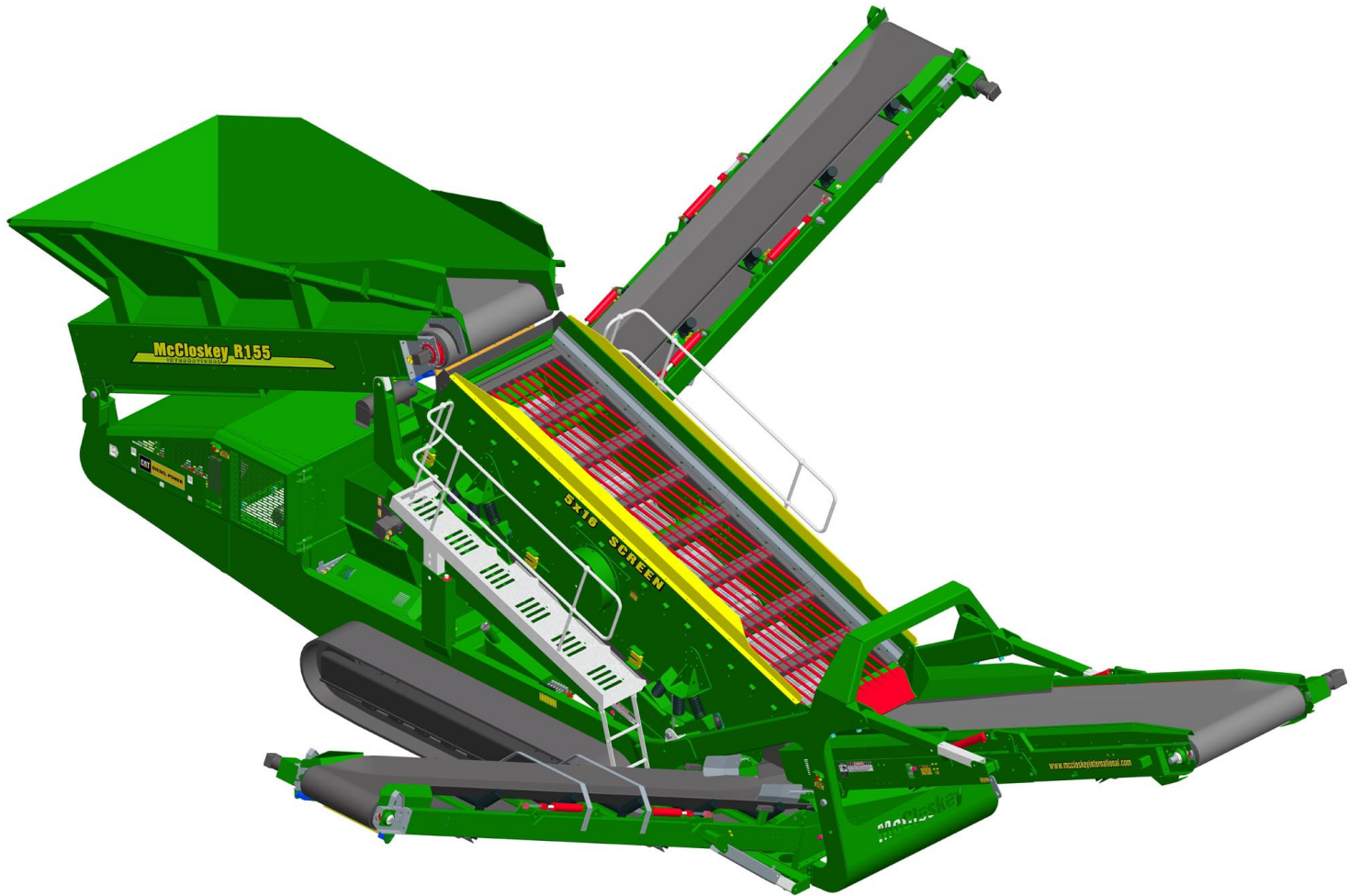
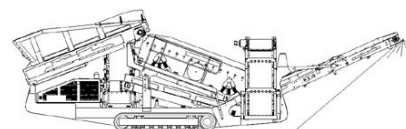


# ***SPECIFICATIONS***



# ***McCloskey*** ***R155***

**DESCRIPTION**

Heavy duty mobile screener with following features:

- 16x5 heavy duty high energy 2 bearing screenbox.
- 127Hp Cat diesel engine.
- Track mobile.
- Direct feed Hardox lined hopper.
- Travel out fixed walkways.
- Integrated hydraulic folding stockpiling conveyors.
- Fast on site setup time – 10 minutes.
- Screen raises at lower end for easy bottom deck access.
- Service standing room inside Powerpack.

**DIMENSIONS AND WEIGHTS**

Length – working	15.21m (49' – 10")
Width – working	13.45m (44' – 1")
Length – transport	15.30m (50' – 2")
Width – transport	2.90m (9' – 6")
Height – transport	3.40m (11' – 2")
Weight – track	34,000 Kgs (74,960 lbs)

**CAPACITIES**

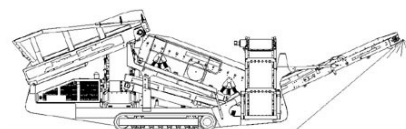
Diesel tank capacity	399 L (105 US gal)
Hydraulic tank capacity	630 L (166 US gal)
Capacity – hopper (level)	8.00 m <sup>3</sup> (10.48 yd <sup>3</sup> )

**BELT FEED CONVEYOR**

Belt width	1400mm (55")
Belt spec	Heavy Duty Plain 500/4 8+2
Drive drum dia.	335mm (13.1")
Tail drum dia.	320mm (12.5")
Gearbox	Bonfig 805 W2 x 2 off
Gearbox ratio	24.2 : 1
Gearbox torque	14,000Nm cont, 25,000Nm max
Motor	Danfoss OMSS125 x 2 off
Flow rate	101.2 Lpm (26.7 US gpm)
Adjustable speed	YES
Maximum speed	16.7 rpm

**COLLECTION CONVEYOR**

Belt width	1200mm (48")
Belt spec	Plain 400/3 4+2
Drive drum dia.	285mm (11.2")
Tail drum dia.	270mm (10.6")
Motor	Danfoss OMM800
Flow rate	101.2 Lpm (26.7 US gpm)
Adjustable speed	NO
Maximum speed	126.5 rpm

**TAIL CONVEYOR**

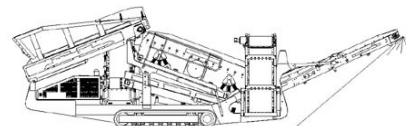
Stockpile height	2.77m (9' – 1") – 3.75m (12' – 3")
Angle	12 to 24 degrees adjustable
Belt width	1400mm (55")
Belt spec	Heavy Duty Chevron – 500/3 5+1.5
Drive drum dia.	285mm (11.2")
Tail drum dia.	270mm (10.6")
Motor	Danfoss OMT400
Flow rate	72.6 Lpm (19.2 US gpm)
Adjustable speed	YES
Maximum speed	90.8 rpm

**FINE PRODUCT SIDE CONVEYOR**

Stockpile height	3.47m (11' – 5") – 3.96m (13')
Angle	20 to 25 degrees adjustable
Belt width	900mm (36")
Belt spec	Plain - 400/3 4+2
Drive drum dia.	285mm (11.2")
Tail drum dia.	270mm (10.6")
Motor	Danfoss OMT400
Flow rate	50.6 Lpm (13.4 US gpm)
Adjustable speed	YES
Maximum speed	126.5 rpm

**MID PRODUCT SIDE CONVEYOR**

Stockpile height	2.51m (8' – 3") – 3.60m (11' – 10")
Angle	14 to 25 degrees adjustable
Belt width	900mm (36")
Belt spec	Plain - 400/3 4+2
Drive drum dia.	270mm (10.6")
Tail drum dia.	200mm (8")
Motor	Danfoss OMT400
Flow rate	50.6 Lpm (13.4 US gpm)
Adjustable speed	YES
Maximum speed	126.5 rpm

**SCREENBOX**

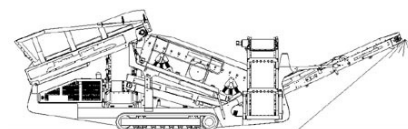
Dimensions – top deck	4.880m x 1.525m (16' x 5')
Dimensions – bottom deck	4.575m x 1.525m (15' x 5')
Bearing type	NSK 110mm bore – 22322 EVBC4
Screens – top deck	5' x 4' side tension – 4 off
Screens – bottom deck	5' x 5' end tension – 3 off
Tensioning – top deck	Quick release pin and wedge
Tensioning – bottom deck	Curved tension bar and adjuster
Screen angle	16 to 20 degrees adjustable
Screen motor	David Brown Hyd. MCC2213 (85.7cc/rev)
Drive system	Direct drive with HRC180 coupling
Hydraulic flowrate	101.2 Lpm (22.26gpm)
Speed adjustable	YES – Pressure compensated FCV
Screen stroke adjustable	6 – 10mm maximum
Screen shaft speed	1130 – 950 rpm
Screen 'g' force	4.29 – 5.05 g

**POWERUNIT AND HYDRAULICS**

Engine	CAT C4.4 (Teir III)
Engine power	127 HP
Engine speed	2200 rpm
Flywheel Pump 1	David Brown Hyd. 5046,5046,5033
LH PTO Pump 2	David Brown Hyd. 5023,5023
Total system flow	376 Lpm (99.3 US Gpm)
Hydraulic tank capacity	630 L (166 US Gal)
Hydraulic tank ratio	1.68 : 1
Hydraulic Oil cooler	YES

**ELECTRICS**

Emergency stops	4 off, 2 powerunit RH&LH, 2 chassis front sides RH&LH.
Chassis cabling	Armored cable
Start Siren	YES – 10 sec delay
Engine shutdowns:	Low oil pressure High water temp Air filter blockage (selectable) Fuel contamination Low hydraulic tank level
Engine room light	YES
Radio control tracks	optional – Hetronic system
Pendant track control	YES – plugged in at feeder end

**TRACKS**

Width	500mm (19.7")
Length	3300mm (10' – 10") crs.
Height	739mm (29")
Gearbox	Bonfiglioli 709
Ratio	142:1
Motor	Rexroth A2FE 90
Speed max	1.14 Kph (0.71 Mph)
Flow rate	101.2 Lpm (26.7 US Gpm)
Attachment to chassis	Bolt On for quick change

**OPTIONS**

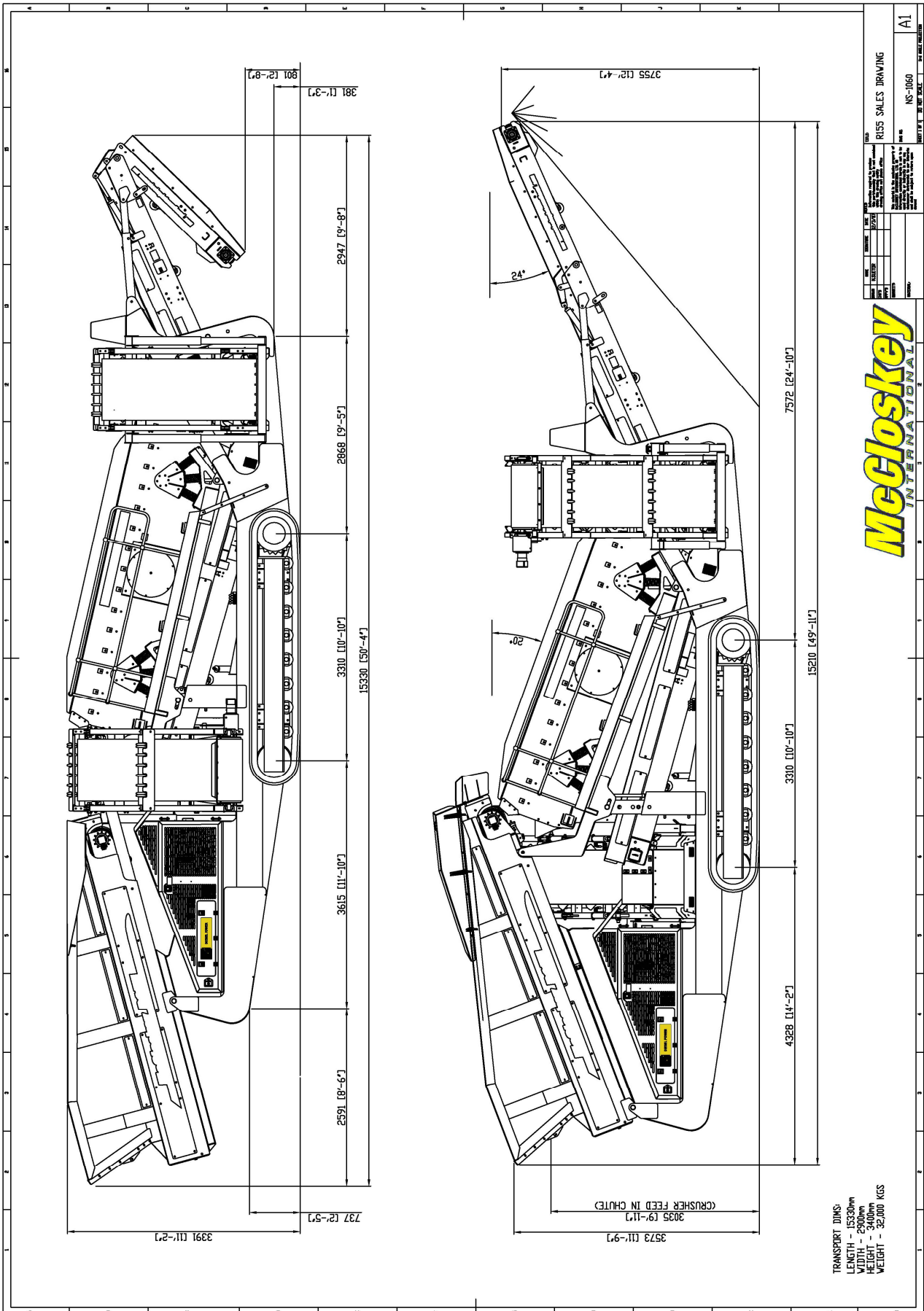
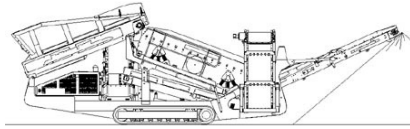
- Heavy duty top deck finger screen.
- Bottom deck finger screen.
- Top deck punch plate screen.
- Bottom deck punch plate
- Top deck Bofor screen.
- Radio remote control for tracks.
- Plate Apron Feeder instead of Belt Feeder.

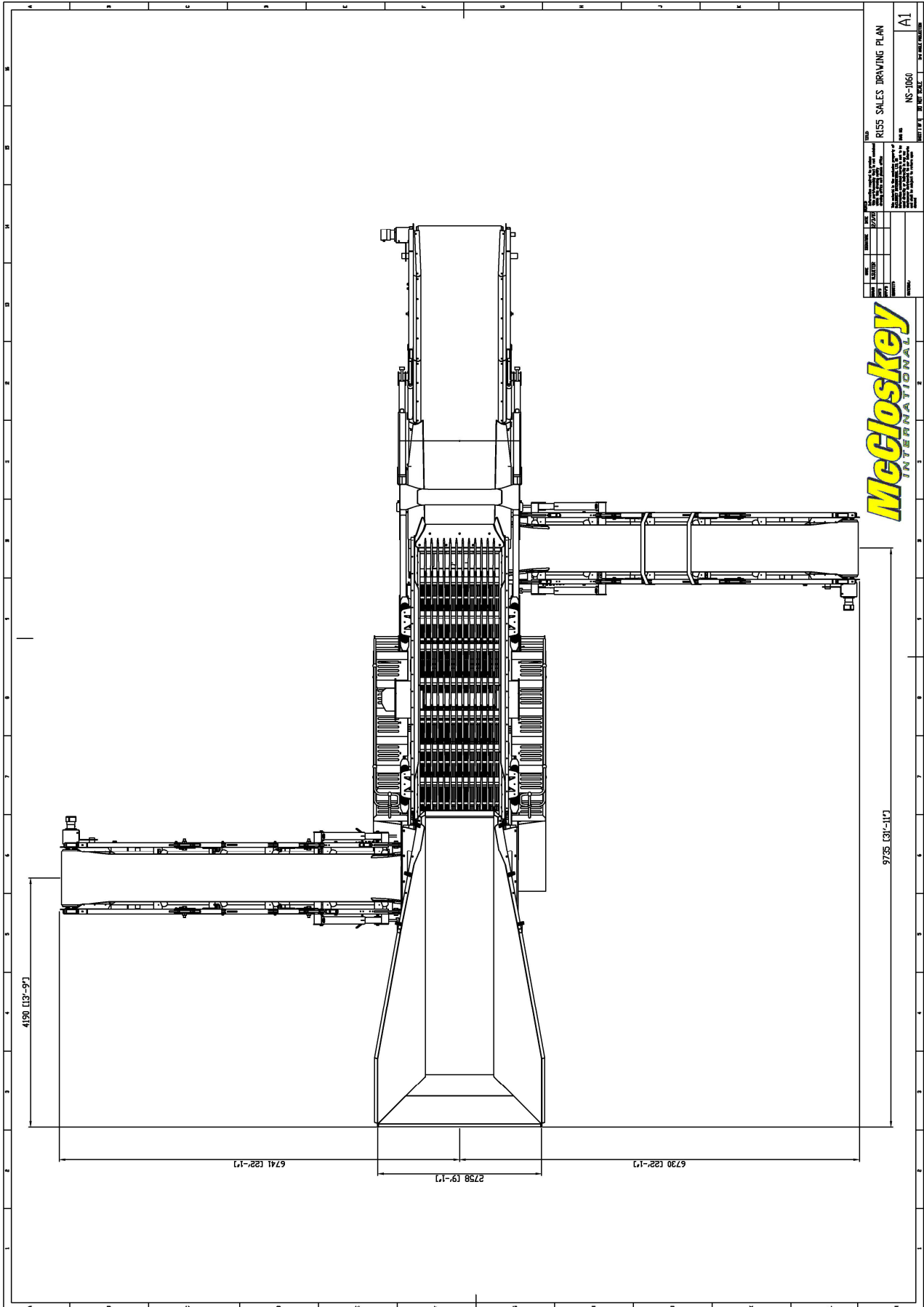
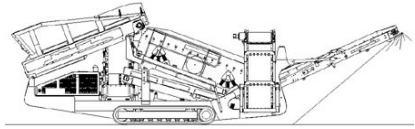
**APRON FEED CONVEYOR**

Apron width	1400mm (55")
Apron spec	10mm Hardox upper surface
Gearbox	Brevini 2090FP
Gearbox ratio	16:1
Gearbox torque	10,000Nm cont, 15,000Nm max
Motor	Danfoss OMTS400
Flow rate	101.2 Lpm (26.7 US gpm)
Adjustable speed	YES
Maximum speed	15.8 rpm

**SAFETY FEATURES**

- External belt alignment points.
- External grease points.
- Engine safety shutdown systems.
- Full safety guarding for nip points.
- CE compliance.





**McCloskey**  
INTERNATIONAL

<p>McCloskey International, Inc. 1000 McCloskey Blvd. P.O. Box 1000 McCloskey, PA 15057 Tel: 724-225-1111 Fax: 724-225-1112 www.mccloskey.com</p>		<p>NS-1060</p>	<p>A1</p>
<p>McCloskey International, Inc. 1000 McCloskey Blvd. P.O. Box 1000 McCloskey, PA 15057 Tel: 724-225-1111 Fax: 724-225-1112 www.mccloskey.com</p>		<p>NS-1060</p>	<p>A1</p>
<p>McCloskey International, Inc. 1000 McCloskey Blvd. P.O. Box 1000 McCloskey, PA 15057 Tel: 724-225-1111 Fax: 724-225-1112 www.mccloskey.com</p>		<p>NS-1060</p>	<p>A1</p>