

 **TEREX** | FINLAY

J-1170

JAW CRUSHERS



WORKS FOR YOU.™

J-1170

The Terex Finlay J-1170 is a compact and aggressive tracked primary jaw crusher. The heartbeat of the machine is a robust hydrostatically driven Terex jaw chamber which provides high capacity with large reduction ratios. The jaw chamber configuration can be set up specifically for quarrying applications or processing construction demolition debris using the hydraulic release chamber option.

The J-1170 features a heavy duty variable speed VGF and integrated prescreen giving excellent production throughput in quarrying, mining, demolition and recycling applications. Notable options include a variable speed pan feeder along with an independent prescreen system. The J-1170's 45.3 tonne / 99600lbs transport weight and compact dimensions mean lower transport costs between and within crushing sites.

STANDARD FEATURES

Engine:

Tier 3/Stage 3A: Caterpillar C9 261kW (350hp)

Tier 4i/Stage 3B: Scania DC9 83A 257kW (350hp)- Hydraulic Adjust

Jaw Chamber:

Terex 1100mm x 700mm (44" x 28") single toggle jaw crusher

75mm pre-set closed side setting for quarry applications

Hydrostatic drive and advanced electronic control system

Reversible operation for clearing blockages

S tooth liners - 18% Manganese as Standard

Hopper / Feeder:

Hopper capacity: 9.6m³ (11.7yd³)

Hydraulically folding hopper sides

Heavy duty vibrating feeder

Integrated pan feeder - cassette is 75mm spacing as standard

Selectable discharge to by-pass conveyor or main conveyor

Mesh aperture on grizzly feeder: 38mm

Main Conveyor:

1000mm (40") wide main belt fitted with impact bars at feed point - Fixed head, discharge height 3100mm

Hydraulic raise/lower of main conveyor

High spec scraper at head drum

Piped for dust suppression complete with spraybars

Separate central operators panel

General:

Piped for overband magnet

Galvanised catwalk c/w handrail, kick board and access ladders

Heavy duty undercarriage unit with 500mm (20") wide pads

Handheld track control set with connection lead

Two speed tracks with 'soft start'

Safety guards in compliance with machinery directive

Emergency stops

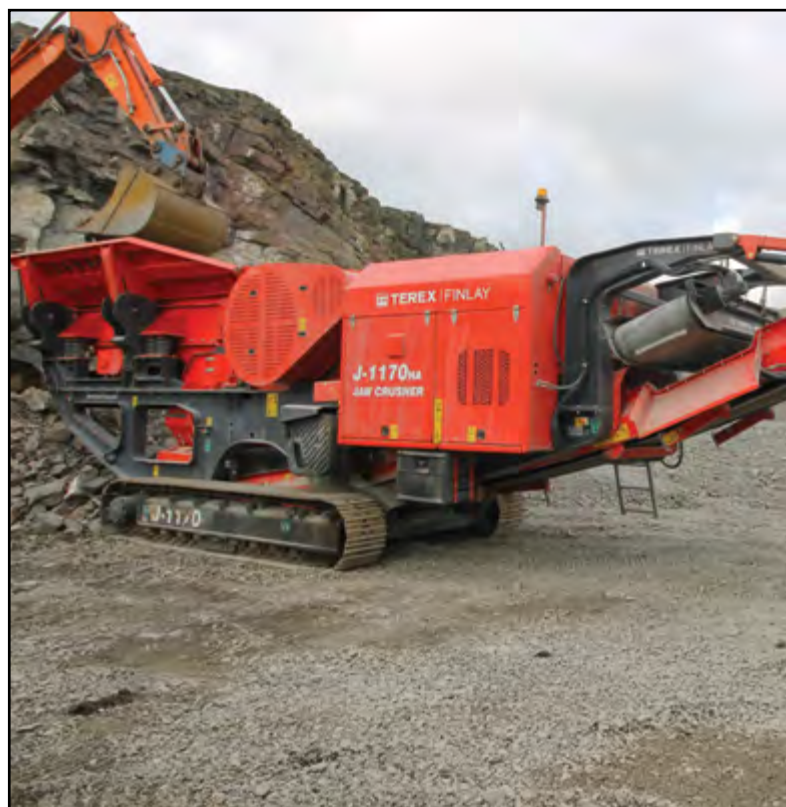
Main conveyor

- ▶ Belt: 1000mm (40")
- ▶ Discharge height: 3100mm (10' 2")
- ▶ Optional extension extends discharge height to 3915mm (12' 10") incorporates folding head section for transport



Features:

- ▶ The robust high performance hydrostatically driven single toggle jaw chamber provides high capacity with large reduction ratios.
- ▶ Automatic variable speed VGF ensures continuous choke feeding of the crushing chamber for optimal productivity.
- ▶ High powered hydrostatic drive ensures precise chamber control and reverse functionality for clearing blockages and assisting in demolition and recycling applications.
- ▶ Hydraulically assisted closed side setting adjustment minimises downtime and offers quick adjustment.
- ▶ Its compact size, quick set up times, ease of transport and user friendly operational features make the J-1170 ideal for all sized operators.



ion)

Powerunit

- ▶ Tier 3/Stage 3A: Caterpillar C9 261kW (350hp)
- ▶ Tier 4i/Stage 3B: Scania DC9 83A 257kW (350hp)
- ▶ Hydrostatic transmission
- ▶ Electronic control system

Jaw chamber

- ▶ Inlet opening: 1100mm x 700mm (44" x 28")
- ▶ Hydrostatic Drive with reverse feature for clearing blockages
- ▶ Hydraulic assisted CSS adjustment
- ▶ Hydraulic release configuration option available

Hopper / Feeder

- ▶ Hopper capacity: 9m³ (11.7yd³)
- ▶ Hydraulic folding
- ▶ Vibrating grizzly feeder

By-pass conveyor (optional)

- ▶ Belt: 650mm (26")
- ▶ Standard discharge height: 2900mm (9' 6")

Chassis

- ▶ Robust, heavy duty chassis

Platforms

- ▶ Powerunit and chamber access

Tracks

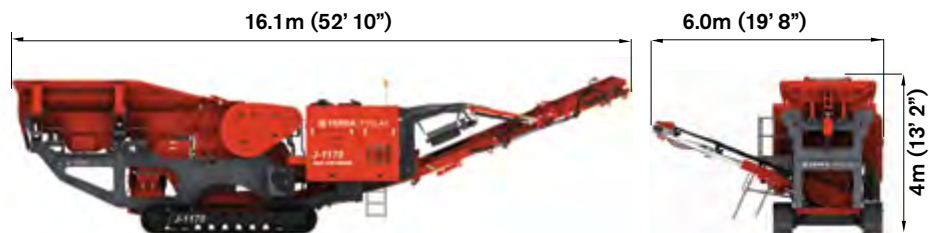
- ▶ Shoe width: 500mm (20")
- ▶ Sprocket centres: 3780mm (12' 6")
- ▶ Bolt on tracks
- ▶ 2 speed soft start



Transport Dimensions



Working Dimensions



Note: Illustrated with optional extended main conveyor, magnet and by-pass conveyor

Machine weight: 45,100kg (99,428lbs)
(with HA chamber, standard VGF, standard main conveyor, magnet and by-pass conveyor)

WORKS FOR YOU.™

Follow us on:



www.terexfinlay.com

Effective January 2013. Product specifications and prices are subject to change without notice or obligation. The photographs and/or drawings in this document are for illustrative purposes only. Refer to the appropriate Operator's Manual for instructions on the proper use of this equipment. Failure to follow the appropriate Operator's Manual when using our equipment or to otherwise act irresponsibly may result in serious injury or death. The only warranty applicable to our equipment is the standard written warranty applicable to the particular product and sale and Terex GB Ltd. makes no other warranty, express or implied. Products and services listed may be trademarks, service marks or trade-names of Terex Corporation and/or its subsidiaries in the USA and other countries. All rights are reserved. Terex® is a registered trademark of Terex Corporation in the USA and many other countries. Copyright 2010 Terex GB Ltd.



WORKS FOR YOU.™